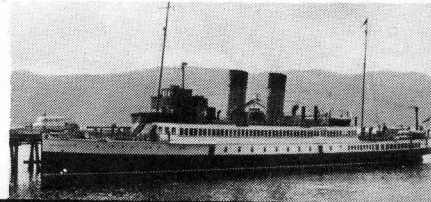
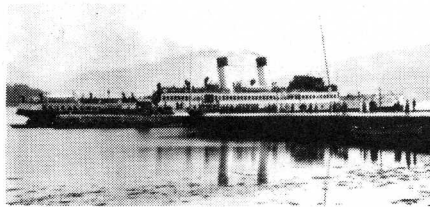




# CLYDE RIVER STEAMER CLUB



Special Excursion from Gourock  
to

# ARDRISHAIG and INVERARAY via Kyles of Bute by veteran turbine steamer KING GEORGE V

## on Saturday 19 May 1973

### ITINERARY

GOUROCK ... .. depart 0930  
ROTHESAY ... .. depart 1030  
ARDRISHAIG... .. arrive 1250

ARDRISHAIG... .. depart 1320  
INVERARAY ... .. arrive 1445  
" " " " depart 1545

WEMYSS BAY ... .. arrive 1935  
DUNOON ... .. arrive 2005  
GOUROCK ... .. arrive 2030

### CONNECTIONS (No extra charge)

HELENSBURGH—outward: 0850 by chartered motor vessel to Gourock; return: 2040 by chartered motor vessel from Gourock.

DUNOON—outward: 0835 by m.v. Glen Sannox to Gourock.

ROTHESAY—return: 1940 by m.v. Cowal from Wemyss Bay.

LARGS—outward: 0930 by chartered motor vessel to Rothesay; return: 1940 by chartered motor vessel from Wemyss Bay.

MILLPORT—outward: 0900 by chartered vessel from Old Pier to Rothesay; return: 1940 by chartered motor vessel to Largs, 2015 by ferry to Cumbrae Slip or to Old Pier by chartered vessel if running late.

CONNECTING TRAIN —  
0820 from Glasgow (Central) to Gourock.

LUNCHEON (90p) and HIGH TEA (80p) will be served at times detailed below. Children under ten—45p and 40p (Prices include VAT).

MEAL TICKETS SHOULD BE OBTAINED IN ADVANCE

In addition, Teas and Refreshments will be available in the Cafeteria. The Steamer is fully licensed.

Book by Post only to:

Mr IAN McCORRIE, 72 Newton St., Greenock, PA16 8ST, or at C.R.S.C. Meetings on 11th April and 9th May.

# FARE £2.50

£2.80 if booked on day of trip

Children still at school £1.25 (£1.40)

CLYDE RIVER STEAMER CLUB — Excursion by King George V to Ardrishaig and Inveraray on Saturday 19 May 1973.

To: Mr I. McCrorie, 72 Newton Street, Greenock, PA16 8ST. I wish to make the following bookings for the above excursion and enclose a remittance for £ . in favour of the "Clyde River Steamer Club", together with a stamped, addressed envelope.

From: Name .....

Address .....

ADULT CHILD

Block Capitals Please